

BIKEe**RACK**™

Electric Self-Loading. Solid.





BIKE eRACK™

Developped With The Future In Mind
BY PASSIONATE eRACK RIDERS

BIKE eRACK™ is a creative manufacturing enterprise located in North Vancouver, Canada, that invented and manufactures high-end quality electric racks for eBikes & bikes & trikes.

During the last years, the fast evolution of eBikes and bikes has become a source of inspiration to design, develop, test and manufacture a new durable bike electric rack to...

MAKE LOADING EASY FOR EVERYONE

We found the best design for...

The First Electric Self-Loading Bike Rack

and made it exceptional on all levels.

The Only One of its Kind Around The World.

New technology powered by clean & renewable energy.

Proudly made locally with North American recyclable aluminum.



We are also developing eRACK™ prototypes to apply our patented pending design of self-loading for motorcycles and off-road vehicles.

Available in 15 ANODIZED aluminum colors for 1 to 5 eBikes or bikes. Custom order available for 6 or more eBikes or bikes, or trikes.

**We love helping riders
and take on new challenges !**

British Columbia, Canada

François Bédard

eRACK RIDERS

Photo Credit: Ed Witwicki

BIKE eRACK™

Tel.: 604-313-0497

info@BIKEeRACK.com

April 2022

BIKEeRACK.com

909 Seymour Blvd, North Vancouver, BC, Canada V7J 2J7

© 2022 BIKE eRACK™. All rights reserved. Patent pending.



⚡ Effortless Self-Loading



⚡ Wireless Remote Control



⚡ Easy Cargo Access



⚡ License & Signal Lights



HIGHLIGHTS



⚡ Anodized Aluminum Colors



⚡ Capacity of 90 lbs Per Bike



⚡ 3 Rattle Free Positions



⚡ Soft Wheel Contact Only



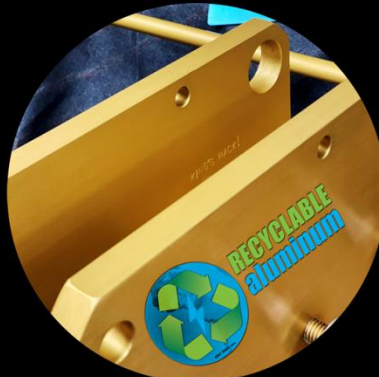
The First Electric Self-Loading Bike Rack



eRACK™



⚡ **Lighted License Plate Holder**



⚡ **Solid. Corrosion Free. Recyclable.**



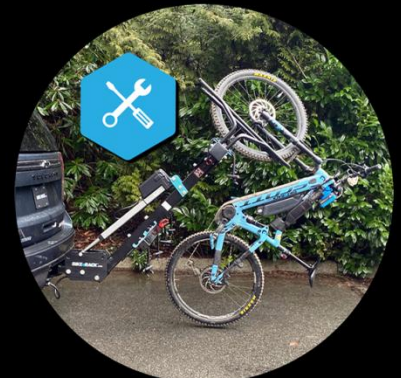
⚡ **Keyed Push Stop Button**



⚡ **Designed To Lock Each Bike**



⚡ **Spacious Between Bikes**



⚡ **Bike Maintenance Station**



⚡ **Security Pin For Extra Safety**



⚡ **For 1 to 5+ eBikes or bikes**



⚡ **eRACK Shipped Assembled**



NATURAL



Raw Aluminum

ANODIZED ALUMINUM

*COLOR & BRONZE finishes are **

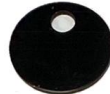
COLORS



Silver



Pewter



Black



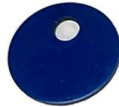
Light Gold



Dark Gold



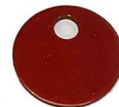
Light Blue



Dark Blue



Light Burgundy



Dark Burgundy



Purple

BRONZES



Champagne Bronze



Light Bronze



Medium Bronze



Dark Bronze



Black Bronze

* Although anodized aluminum is **highly fade-resistant**, depending on UV exposure, some specific colors may fade over time. Except for these 3 colors (Silver, Light Gold, Dark Gold) and the 5 bronze finishes. Bronzes are premium finishes that should not fade.

Color finishes of the eRACK™ finished product may vary slightly from these preview samples.

ALL RESISTANT **HIGHLY AESTHETIC** **EXCEPTIONALLY DURABLE**



PRICING & SPECIFICATIONS

	Raw	Colors	Bronzes	Rack Weight	Between Bikes	Max Capacity
⚡ eRACK 1	\$2,399	\$2,799	\$2,869	70 lbs (32 kg)	not applicable	90 lbs (41 kg)
⚡ eRACK 2	\$2,849	\$3,299	\$3,429	84 lbs (38 kg)	26" (66 cm)	180 lbs (82 kg)
⚡ eRACK 3	\$3,049	\$3,549	\$3,689	92 lbs (42 kg)	25" (63 cm)	270 lbs (123 kg)
⚡ eRACK 4	\$3,249	\$3,799	\$3,949	104 lbs (47 kg)	19" (48 cm)	325 lbs (148 kg)
⚡ eRACK 5	\$3,449	\$4,049	\$4,219	115 lbs (52 kg)	17" (43 cm)	325 lbs (148 kg)

⚡ **eRACK 6 or more eBikes or bikes, or trikes, available on custom order**

Prices are in Canadian dollars and subject to change.

⚡ TECHNICAL DETAILS

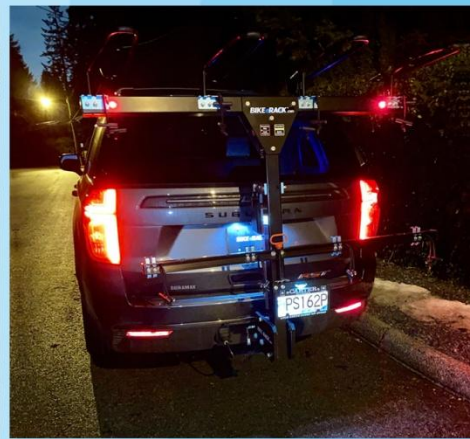
- Hitch mounted **eRACK**™ long reach is also perfect for **Recreational Vehicles**, buses, shuttles and **all vehicles with a 2" receiver hitch** – the retainer bolt is a grade 8 and allows a 3/8 padlock for safety and theft protection
- Fits wheels **24" to 29"** — **20"** Wheel adapter available on request
- Basket replacement for **Fat Bike** at \$39 — Basket for **bigger wheels** available on request
- Some front wheel **fenders** will not fit the wheel carrier basket and may need to be removed or replaced by a fender without fender stays

⚡ ELECTRICAL SYSTEM DETAILS

- **Made to last with all industrial grade components**
- **eRACK**™ requires power from the vehicle to operate via standard RV style connector (vehicle's 7-pin connection) with a 20 amp fuse link
- Not necessary, but for maximum performance from the unit: a AWG 8 electrical wire is recommended
- **eRACK 1** also has a **lighted license plate holder** and is the only one without **signal lights**

⚡ **BIKE eRACK**™ products carry a TWO-YEAR limited warranty.





ALL INFO
VIDEOS & PHOTOS
BIKE eRACK.com
COLORS ⚡ PREVIEW
ONLINE STORE

